

ewo

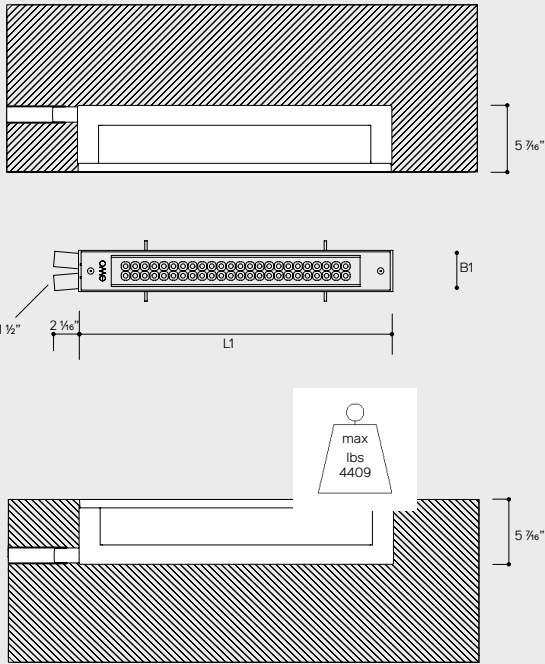
IN

CEILING, GROUND
IN 1, IN 2, IN 3, IN 4,
IN 5

For area, walkway
or indoor lighting

Configurator

CE IP66/IP67 RoHS IK10 pending



Housing		Measurements			
Housing material	Aluminum	Model	L1 [in]	B1 [in]	Weight [lbs]Ⓢ
Housing finish	Coated black matte RAL 9005	IN 1*	13.2	3.4	9.9
Glass	Safety glass (ESG)	IN 2*	19.6	3.4	14.3
Mounting options	Ceiling, ground	IN 3*	25.9	3.4	18.7
	Lighting unit adjustable +/- 5°	IN 4	32.2	3.4	23.1

Electrical	A-Series	T-Series
Protection class	I / II	I
Voltage [V], [Hz]	120-277, 50/60	120-277, 50/60
Current feed max. [mA]	500*	225
LED power max. [W]	87	60
* IN 2, 3, 4: 400 mA IN 5: 350 mA		

Driver	A-Series	T-Series
Control options	<div>ON OFF 1-10V DALI WIRELESS DMX CLOUD</div>	<div>T8 DALI DMX</div>
Programming [optional]	Constant Lumen Output (CLO) Emergency power supply (AC/DC) Stand-alone	
Control accessories	Further accessories on request	
Software	connex-x light management for remote management and control	



Precision lens optics * also
available in satiné version



ewoLightTile: low glare
light-guiding panels

AG01
Symmetric Narrow 10°
Type VS

AG02
Symmetric Medium 26°
Type VS

AG03
Symmetric Flood 50°
Type VS

TS11
Asymmetric Side and Forward Throw
Type III Very Short

AG04
Symmetric Elliptical 8°-40°
Type I Very Short

AH02*
Symmetric Wide Flood
Type VS

AP07*
Asymmetric Extra Forward
Type IV Short

TP08
Asymmetric Extra Forward
Type III Very Short

AS07
Asymmetric Side Throw
Type II Short

AS08*
Asymmetric Side and Forward Throw
Type III Short

Shape your own light by combining
any light distribution

2,200 K
CRI ≥ 70

2,700 K
CRI ≥ 70

3,000 K
CRI ≥ 80

4,000 K
CRI ≥ 70

Tunable White
CRI ≥ 80

Performance

Optics	AG01	AG02	AG03	AG04	AH02	AP07	AS07	AS08 satiné	TS11	TP08
MacAdam ellipses (SDCM)				≤ 3 SDCM						≤ 5 SDCM
Max Lumens per Watt	84.9	84.9	86.5	88.7	85	60.4	75.1	76.3	70	88.3

Model	IN 1	IN 2	IN 3	IN 4	IN 5	IN 1	IN 2	IN 3	IN 4	IN 5
Light units	1	2	3	4	5	1	2	3	4	5
Luminous flux [lm]	340–2,100	670–3,500	1,000–5,300	1,400–7,000	1,700–7,900	900	1,800	2,700	3,600	4,600

Equipment variations

A-Series

IN 1: 1 lighting unit

IN 2: 2 lighting units

IN 3: 3 lighting units

IN 4: 4 lighting units

IN 5: 5 lighting units

T-Series

IN 1: 1 lighting unit IN

2: 2 lighting units IN

3: 3 lighting units

IN 4: 4 lighting units

IN 5: 5 lighting units

Accessories



Plasterkit



Stainless steel frame

ewo

IN Ground



INGROUND

-

-

-

-

-

-

-

-

Lighting Type

A-Series

T-Series

Design

MF- Max Flux

ST - Standard

OA - Asymmetric Optimal

Model

IN1

IN2

IN3

IN4

IN5

Output*

200 mA

250 mA

300 mA

350 mA

400 mA

450 mA

500 mA

Requested Im

CCT

2.2K - 2200K

2.7K - 2700K

3K - 3000K

4K - 4000K

TW- Tunable White

RGBW

Optic*

AG01 Symmetric narrow flood

AG02 Symmetric narrow flood

AG03 Symmetric flood

AG04-H Symmetric elliptical

AH02 Symmetric wide flood

AP07 Asymmetric extra forward throw

AP07 satine Asymmetric extra forward throw

AS06 Asymmetric extra side throw

AS08 Asymmetric side and forward throw

AS08 satine Asymmetric side and forward

AS07 Asymmetric side throw

AS07 satine Asymmetric side throw

AH02 satine Symmetric extra forward and back

TS11 Asymmetric side and forward throw

TS08 Asymmetric extra forward throw

Accessories

SS - Stainless Steel Frame

NS - No Frame

Control

On/Off

0-10V

DALI

DMX

Cloud

* Lumens vary based on previous selections

* Other outputs on request